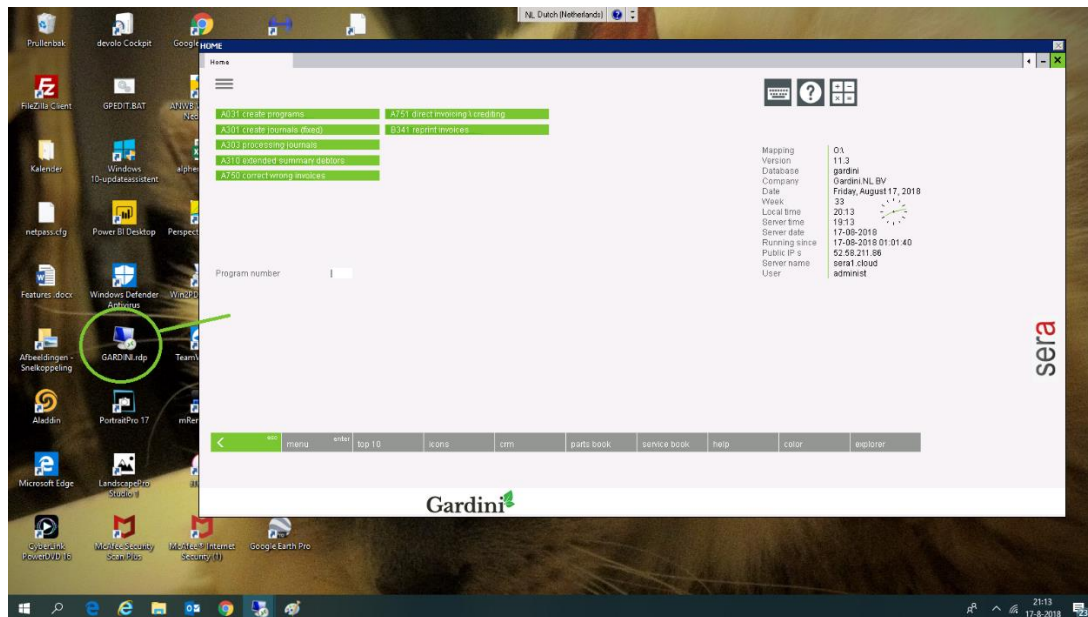


# sera cloud access

You can run Sera in several ways.

## RDP client

The icon is supplied by Sera. Place it at your desktop. After clicking on it, the system will ask for credentials and Sera will start as if it is a program that runs locally on your Windows or IOS computer.



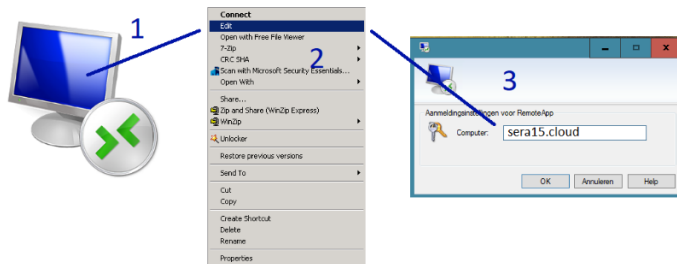
### NOTE:

This option show the true resolution of the server application (basic setting 1280\*720). It is not scalable, so if Sera appears too small, please make the resolution of your screen smaller or use one of the options below.

## Remote desktop (MSTSC)

Mstsc (Microsoft Terminal Server Client) is a standard program on a PC. IOS has it's own equivalent. Sera runs in a box. The box has a zoom function.

Find out the name of the **<SERVER>** you want to connect to.

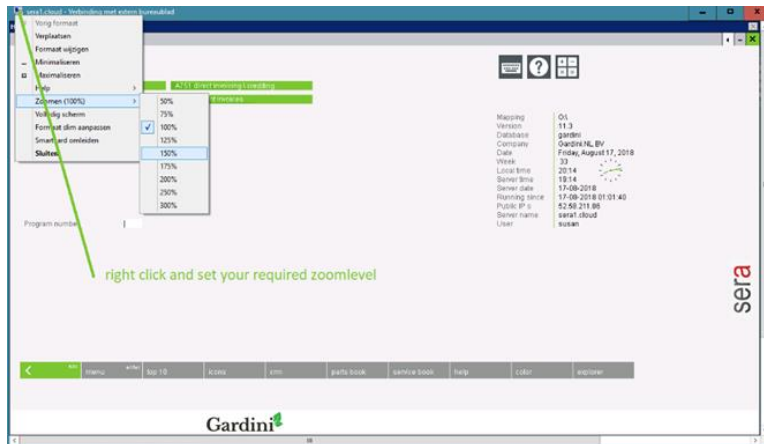


1. Right click on the RDP icon
2. Choose Edit
3. Find the server name
4. Create a batch file with a name like SERA.BAT (use notepad)
5. Copy the content from the example below
6. Change the name of **<SERVER>** into the server name
7. Start the batch file

EXAMPLE:

```
START MSTSC /V <SERVER> /H:720 /W:1280 /span 2>NUL  
EXIT 2>NUL
```

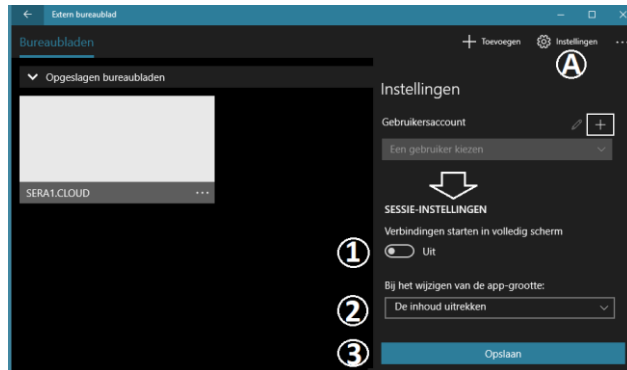
**Zoom the box the way you like. (Note: the zoom function is only available from Windows 10)**





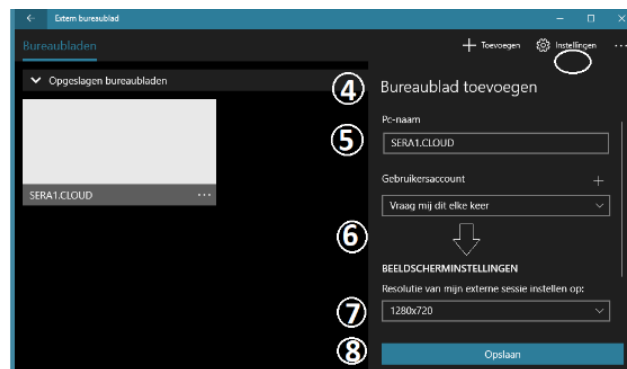
## Remote Desktop / Extern bureaublad (Microsoft Store)

### A. SETTINGS



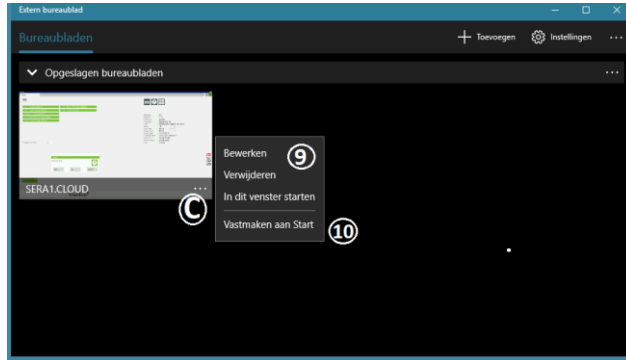
1. **Unmark** “start in full screen”
2. Choose “*stretch the content*” to enlarge the screen
3. Leave the other settings default or adjust the way you prefer

### B. +ADD A CONNECTION



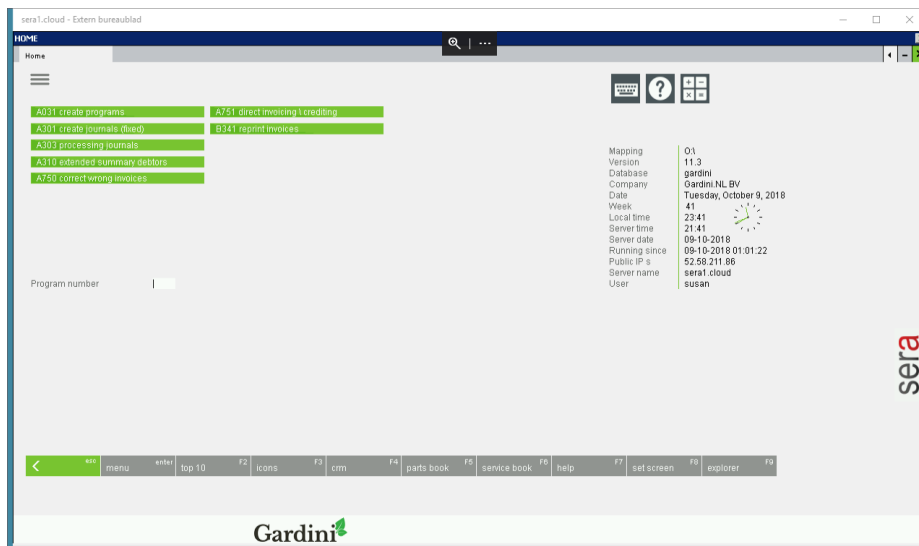
4. Choose Desktop
5. PC-Name - enter the name of the **<SERVER>**, like SERA1.CLOUD
6. Select Show more
7. Adjust the screen size from “Choose for me” into 1280 x 720
8. Click SAVE

## C. ADJUST THE ICON



9. Choose EDIT to change the previous settings

10. Connect the Windows START (or connect later to the task bar)



Adjust the screen size by dragging the right lower corner.

NOTE: the SET SCREEN button (lower side of the screen) to choose another resolution.

## IPAD access

Download the Microsoft Remote Desktop app



Enter the server name (see Remote Desktop) and your credentials

Type	Number	Name	Tel.number	City
Pro	Q001260	A.A. Fagoe	0642129027	2408 LL Alphen aan den Rij
Cus	Q001278	A. Ruijgrok	0642936324	2286 WB RIJSWIJK
Cus	002205	Aadil Hramat	0648744194	6004JE VWEERT
Pro	AARTMASTEB	Aart Mastebroek	06 14846701	3751 JH BUN SCHOTEN - SPA
Pro	Q001179	Aart Timmers	0172218847	-
Cus	003723	Aart Vermeulen	0104550681	3067AE ROTTERDAM
Cus	001730	Ab Ad As	31646506310	2518JR FSD
Cus	003540	Ab Bos	0622726250	2716 NH ZOETERMEER
Pro	ABDEL	Abdel daouayry	NIET BEKEND	Noordorp
Pro	Q021668	Abdelhamid Idrissi	0614499408	1067 AW AMSTERDAM

Use the keyboard Icon in the right upper corner to toggle between a regular screen and the screen adjusted for an Ipad with a 4:3 screen.